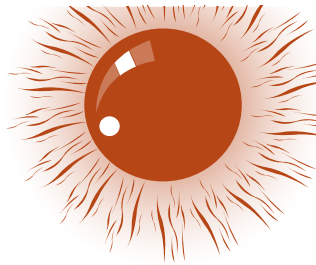


Bimator™ Eye Drops

Bimatoprost 0.03% & Timolol 0.5%

Sterile Eye Drops



COMPOSITION

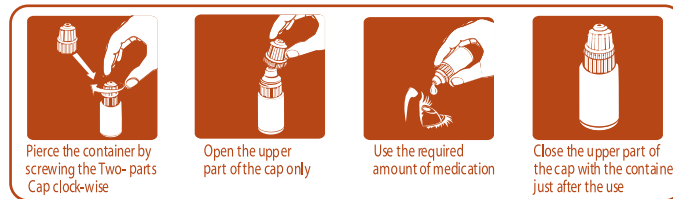
Bimator™ Eye Drops: Each ml contains Bimatoprost INN 0.3 mg & Timolol 5 mg as Timolol Maleate BP.

INDICATION

Bimator™ Eye Drops is indicated for the reduction of intraocular pressure in adult patients with open-angle glaucoma or ocular hypertension who are insufficiently responsive to mono-therapy.

DOSAGE & ADMINISTRATION

The recommended dose is one drop in the affected eye(s) once-daily.



CONTRAINDICATION

It is contraindicated in patients with known hypersensitivity to any ingredient of this formulation.

WARNING & PRECAUTION

Like other topically applied ophthalmic medicinal products, the active substances Timolol/ Bimatoprost may be absorbed systemically. Due to the beta-adrenergic component, Timolol, the same types of cardiovascular, pulmonary and other adverse reactions as seen with systemic beta-blockers may occur. Caution should be exercised in treating patients with severe or unstable and uncontrolled cardiovascular Disease.

DRUG INTERACTION

There is a potential for bradycardia when ophthalmic beta-blockers solution is administered concomitantly with oral calcium channel blockers, guanethidine, beta-adrenergic blocking agents, parasympathomimetics, anti-arrhythmics and digitalis glycosides. Concomitant ocular medications should be administered at least 5 min apart from the instillations of **Bimator™** Eye Drops.

USE IN PREGNANCY & LACTATION

Use in Pregnancy: There are no adequate data from the use of the Bimatoprost / Timolol fixed combination in pregnant women. It should not be used during pregnancy unless clearly necessary. Use in Lactation: Animal studies showed Bimatoprost is excreted in rat's milk. & Timolol is excreted in human milk. Therefore, Bimatoprost / Timolol should not be used during breastfeeding.

PEDIATRIC & GERIATRIC USE

Pediatric Use: Safety and effectiveness in pediatric patients have not been established.

Geriatric Use: No overall differences in safety or effectiveness have been observed between elderly and other adult patients.

SIDE EFFECT

In clinical trials, Ocular hyperemia was reported in approximately 26% of patients. 5 to 10 % in these clinical studies included decreased visual acuity, eye discomfort, foreign body sensation, pain and pruritis.

STORAGE

Store below 25°C in a dry place protected from light. Keep out of reach of children. Solution can be used up to 28 days after first opening.

HOW SUPPLIED

3 ml of **Bimator™** Eye Drops is supplied in LDPE bottle.

Manufactured by



SQUARE
PHARMACEUTICALS LTD.

Kaliakoir, Bangladesh

TM Trade Mark.